

Standard Handle Bracket Replacement CL SERIES, ENTRANCE DOORS

**THIS WORK INSTRUCTION IS FOR REPLACING BROKEN HANDLES
WITH THE NEW LARGER BRACKETS.**



OLD BRACKET: 0.140"



NEW BRACKET: 0.208"



Figure A

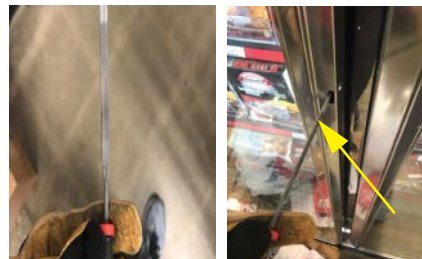


Figure B



Figure C

Tools Required:

- Phillips Screw Driver
- Small Metal File
- Needle nose pliers

REMOVE DOOR BROKEN HANDLE FROM DOOR:

- Remove Phillips head screws (x2) from door to remove existing broken connectors. **(You will need a pair of needle nose pliers to grab onto the broken piece so that it does not fall inside of the door once the screw comes out).** (Figure A).

FILE VERTICAL EDGES:

- File the vertical edges of the existing holes to allow for the larger handle connectors. Holes should be checked periodically for proper fit of new connectors. **(DO NOT MAKE HOLE TOO LARGE or the new handles may be loose).** (Figure B).

INSTALL NEW HANDLE:

- Insert new handle with larger connectors and replace Phillips screws (x2). (Figure C).