

The Highest Quality Cooler Door for Your Dollar

Known for its traditional style and proven reliability, the STYLELINE[®] CLASSIC[®] Plus sets a new industry standard that is compliant with EISA regulations.

Features

- Condensation protection up to 75% relative humidity*
- Anti-condensate frame and mullion heaters
- Tempered two-pane Low-E glass coat and gas-filled
- NSF-certified door, frame and shelving systems
- UL-certified door and frame
- Side-mount, easy to change door handles
- Reliable door hinging system, hold open cam and one-time adjustment torque rod

STYLELINE Exclusive Standard Features

- Lifetime finish in satin black or anodized bright silver, satin silver or bright gold
- Stainless steel trim
- Easy-clean covered frames

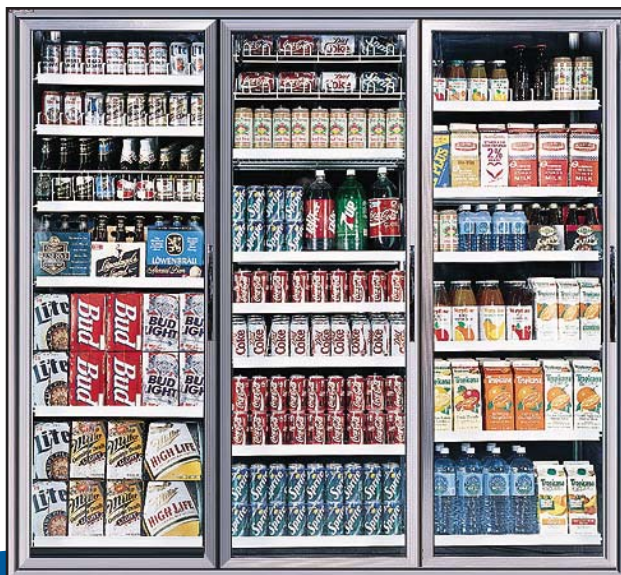
Package Includes

- High output T-8 electronic lighting
- Pre-wired and fully integrated energy control system
- Heavy-duty 27 inch shelving with price tag molding
- Shelf standards (posts) with brackets and levelers

Optional Upgrades & Accessories

- Advanced Lighting System (ALS) with prism lens
- LED lighting system
- Full-length handle
- Slide-Trac[®] shelving system
- Super Slide-Trac[®] gravity-flow shelving system
- Integrated locking system

*Ideal ambient temperatures of 75°F and cooler temperature of 38°F



CLASSIC[®] Plus