

- 1- Lay frame flat on floor, facing up.
- 2- Locate and Remove motion sensor kit packaging from the top of the frame. **(Figure 1)**
- 3- Remove foil tape from the frame to expose motion sensor wiring. **(Figure 2)**
- 4- Locate cat-5 cable and 4-prong terminal connections on frame.

NOTE: Cat-5 cable is only provided with High-Humidity & Freezer doors. Normal temp will only have 4-prong terminal connection for ambient sensor.

- 5- Attach motion sensor bracket to the frame. **(Figure 3)**
- 6- Attach motion sensor to the motion sensor bracket using (3) provided screws. **(Figure 4)**

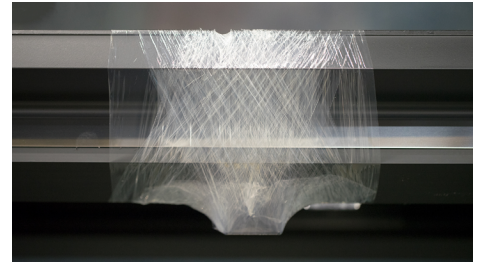


Figure 1

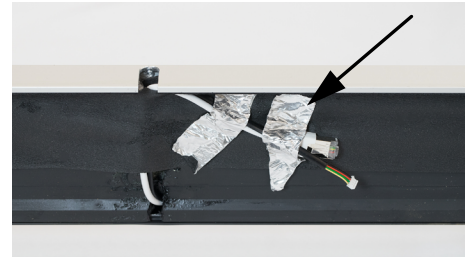


Figure 2

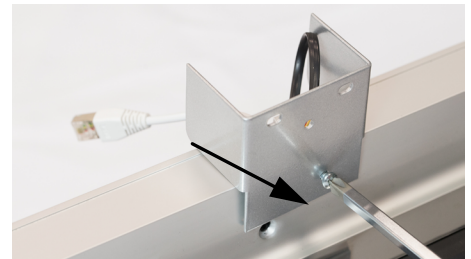
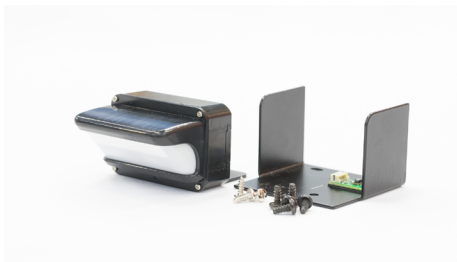


Figure 3



Figure 4



LED Occupancy & Anti-sweat Sensor Kit. Supplied with High Humidity, Freezer and Entrance Doors with LED lighting. White for Silver Frames. Black for Black Frames.



Anti-sweat Sensor Kit. Supplied with Normal Temp Doors with LED lighting and Entrance Doors without LED lighting. White for Silver Frames. Black for Black Frames.



Ambient Sensors & LED Motion Sensor Installed



LED Motion Sensor & Ambient Sensor Connected

