

# Styleline® CL

## INDUSTRY PREFERRED DOOR & FRAME SYSTEM SOLUTION



STYLELINE® CL sets a new standard in protection against condensation by providing advanced thermal design fully compliant with DOE 2017 regulations.

- Available for cooler, high humidity and freezer applications
- Energy Efficiency and Sustainability
- Proven hardware simplicity and reliability
- Pre-wired energy controller
- STYLELINE LED Plus included



**STYLELINE®**  
By Commercial Refrigerator Door Company

[www.styleline.com](http://www.styleline.com)

# Industry Preferred Door & Frame System

# Styleline® CL



**APPLICATION:** Cooler, High Humidity, Freezer



**PROTECTION:** NT: 75F/75%RH @ 35F Cooler Temp.  
HH: 75F/85%RH @ 35F Cooler Temp.  
LT: 75F/64%RH @ -10F Cooler Temp.



**LIGHTING:** Styleline LED Plus

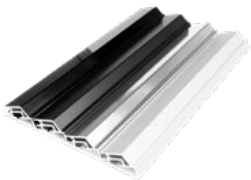


**WARRANTY:** 2-years workmanship and materials,  
5-years LED, 10-years non-heated glass pack

- DOE 2017 compliant
- 2 pane glass pack (cooler), Argon fill, Low-E
- 3 pane glass pack (high humidity, freezer), Argon fill, Low-E
- Energy controller standard. Occupancy Sensor for HH & LT applications
- Advanced thermal glass pack design delivers enhanced condensation protection with no energy use
- STYLELINE® reliable door hinge, hold open cam, one-time adjustment torque rod and self-closing hinge system
- Stainless steel trim with new and improved magnetic door gasket design
- Easy-clean covered Frames

## What's Included:

- STYLELINE® LED Plus lighting system
- Five heavy-duty 27" NSF approved black shelves and post with price tag molding and black brackets. White shelves with galvanized post and galvanized brackets are also available



Finishes



Post Colors



Standard Handle Finishes

Door Size WxH	24" X 63"	26" X 63"	30" X 63"	26" X 72"	24" X 72"	26" X 80"	30" X 66"	30" X 72"	30" X 80"
NCO Height	64 3/4"	64 3/4"	64 3/4"	73 3/4"	73 3/4"	81 5/8"	67 3/4"	73 3/4"	81 5/8"
Door Lineup	<b>Net Cooler Opening Width</b>								
1	2' 1 1/16"	2' 3 13/16"	2' 7 3/4"	2' 3 13/16"	2' 1 1/16"	2' 3 13/16"	2' 7 3/4"	2' 7 3/4"	2' 7 3/4"
2	4' 13/16"	4' 6 5/16"	5' 2 3/16"	4' 6 5/16"	4' 13/16"	4' 6 5/16"	5' 2 3/16"	5' 2 3/16"	5' 2 3/16"
3	6' 9/16"	6' 8 13/16"	7' 8 5/8"	6' 8 13/16"	6' 9/16"	6' 8 13/16"	7' 8 5/8"	7' 8 5/8"	7' 8 5/8"
4	8' 5/16"	8' 11 5/16"	10' 3 1/16"	8' 11 5/16"	8' 5/16"	8' 11 5/16"	10' 3 1/16"	10' 3 1/16"	10' 3 1/16"
5	10' 1/16"	11' 1 13/16"	12' 9 1/2"	11' 1 13/16"	10' 1/16"	11' 1 13/16"	12' 9 1/2"	12' 9 1/2"	12' 9 1/2"
6	12' 2 13/16"	13' 7 5/16"	15' 6 15/16"	13' 7 5/16"	12' 2 13/16"	13' 7 5/16"	15' 6 15/16"	15' 6 15/16"	15' 6 15/16"
7	14' 2 9/16"	15' 9 13/16"	18' 1 3/8"	15' 9 13/16"	14' 2 9/16"	15' 9 13/16"	18' 1 3/8"	18' 1 3/8"	18' 1 3/8"
8	16' 2 5/16"	18' 5/16"	20' 7 13/16"	18' 5/16"	16' 2 5/16"	18' 5/16"	20' 7 13/16"	20' 7 13/16"	20' 7 13/16"
9	18' 2 1/16"	20' 2 13/16"	23' 2 1/4"	20' 2 13/16"	18' 2 1/16"	20' 2 13/16"	23' 2 1/4"	23' 2 1/4"	23' 2 1/4"
10	20' 1 13/16"	22' 5 5/16"	25' 8 11/16"	22' 5 5/16"	20' 1 13/16"	22' 5 5/16"	25' 8 11/16"	25' 8 11/16"	25' 8 11/16"

Complete chart available at [styleline.com](http://styleline.com)

Shelving Size	Description / Information
24" x 27", 26" x 27", 30" x 27"	*Five Standard (black/white) Heavy-Duty epoxy and NSF approved
30" x 36"	*Five Standard Slide Trac™ Gravity-flow (black/white) Heavy-Duty epoxy and NSF approved

Seven shelves with 80" Size Doors

## Options Available:

- Full length handle
- Integrated door lock
- Slide-Trac® shelving system
- Super Slide-Trac® gravity-flow shelving system