

Styleline® FX

LARGEST PRODUCT
VIEWING AREA IN THE
INDUSTRY



STYLELINE® FX sets a new standard in protection against condensation by providing advanced thermal design fully compliant with DOE 2017 regulations.

Available for cooler and freezer applications, STYLELINE® FX door and frame system is ideal for those high-end applications without sacrificing performance and elegance!

- Elegant edge-to-edge glass appearance
- Proven hardware simplicity and reliability
- Pre-wired energy controller
- Field Reversible Door Swing* - Contact us for details
- STYLELINE LED Plus included



STYLELINE®
By Commercial Refrigerator Door Company

www.styleline.com

All Glass Appearance Door!

Styleline® FX



APPLICATION: Cooler. Normal Temp.



PROTECTION: NT: 75F/75%RH @ 35F Cooler Temp.



LIGHTING: Styleline LED Plus

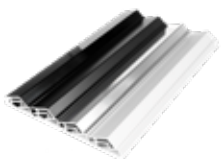


WARRANTY: 2-years workmanship and materials, 5-years LED, 10-years non-heated glass pack

- DOE 2017 complaint
- Full length handle standard
- 2 Pane Glass Pack (cooler), Argon filled, Low-E
- Energy controller standard.
- Advanced thermal glass pack design delivers enhanced condensation protection with very low energy use
- STYLELINE® reliable door hinge, hold open cam, one-time adjustment torque rod and self-closing hinge system
- Stainless steel trim & new and improved magnetic door gasket design
- Field Reversible Door Swing* - Contact us for details

What's Included:

- STYLELINE® LED Plus lighting system
- Five heavy-duty 27" NSF approved black shelves and post with price tag molding and black brackets. White shelves with galvanized post and galvanized brackets are also available
- Standard STYLELINE® Warranty



Finishes



Full-length Handle



Post Colors

Door Size WxH	24" X 63"	26" X 63"	30" X 63"	26" X 72"	24" X 72"	26" X 80"	30" X 66"	30" X 72"	30" X 80"
NCO Height	64 3/4"	64 3/4"	64 3/4"	73 3/4"	73 3/4"	81 5/8"	67 3/4"	73 3/4"	81 5/8"
Door Lineup	Net Cooler Opening Width								
1	2' 1 1/16"	2' 3 13/16"	2' 7 3/4"	2' 3 13/16"	2' 1 1/16"	2' 3 13/16"	2' 7 3/4"	2' 7 3/4"	2' 7 3/4"
2	4' 13/16"	4' 6 5/16"	5' 2 3/16"	4' 6 5/16"	4' 13/16"	4' 6 5/16"	5' 2 3/16"	5' 2 3/16"	5' 2 3/16"
3	6' 9/16"	6' 8 13/16"	7' 8 5/8"	6' 8 13/16"	6' 9/16"	6' 8 13/16"	7' 8 5/8"	7' 8 5/8"	7' 8 5/8"
4	8' 5/16"	8' 11 5/16"	10' 3 1/16"	8' 11 5/16"	8' 5/16"	8' 11 5/16"	10' 3 1/16"	10' 3 1/16"	10' 3 1/16"
5	10' 1/16"	11' 1 13/16"	12' 9 1/2"	11' 1 13/16"	10' 1/16"	11' 1 13/16"	12' 9 1/2"	12' 9 1/2"	12' 9 1/2"
6	12' 2 13/16"	13' 7 5/16"	15' 6 15/16"	13' 7 5/16"	12' 2 13/16"	13' 7 5/16"	15' 6 15/16"	15' 6 15/16"	15' 6 15/16"
7	14' 2 9/16"	15' 9 13/16"	18' 1 3/8"	15' 9 13/16"	14' 2 9/16"	15' 9 13/16"	18' 1 3/8"	18' 1 3/8"	18' 1 3/8"
8	16' 2 5/16"	18' 5/16"	20' 7 13/16"	18' 5/16"	16' 2 5/16"	18' 5/16"	20' 7 13/16"	20' 7 13/16"	20' 7 13/16"
9	18' 2 1/16"	20' 2 13/16"	23' 2 1/4"	20' 2 13/16"	18' 2 1/16"	20' 2 13/16"	23' 2 1/4"	23' 2 1/4"	23' 2 1/4"
10	20' 1 13/16"	22' 5 5/16"	25' 8 11/16"	22' 5 5/16"	20' 1 13/16"	22' 5 5/16"	25' 8 11/16"	25' 8 11/16"	25' 8 11/16"

Complete chart available at styleline.com

Shelving Size	Description / Information
24" x 27", 26" x 27", 30" x 27"	*Five Standard (black/white) Heavy-Duty epoxy and NSF approved
30" x 36"	*Five Standard Slide Trac™ Gravity-flow (black/white) Heavy-Duty epoxy and NSF approved

Seven shelves with 80" Size Doors

Options Available:

- Slide-Trac® shelving system
- Super Slide-Trac® gravity-flow shelving system
- Satin Silver
- Satin Black