

Styleline® HDD

HEAVY DUTY ENTRANCE DOOR



STYLELINE® HDD Heavy Duty Entrance doors are engineered for high volume use, durability and peace of mind.

The STYLELINE® HDD Entrance Door stands up to the highest traffic areas and provides shopper-friendly, trouble-free performance.

- Stainless steel trim
- Heavy-duty hydraulic closer
- Kick plate
- DOE 2017 compliant



STYLELINE®
By Commercial Refrigerator Door Company

www.styleline.com

Drive More Traffic & Revenue!

Styleline® HDD

Graph-X™
illuminated glass



* Shown with optional custom illuminated glass



APPLICATION: Cooler and High Humidity



PROTECTION: NT: 75F/75%RH @ 35F Cooler Temp.
HH: 75F/85%RH @ 35F Cooler Temp.



LIGHTING: Styleline LED Plus (Optional)



WARRANTY: 2-years workmanship and materials, 5-years LED, 10-years non-heated glass pack

- Top-mounted heavy-duty hydraulic closer
- 3 pane glass pack (NT, HH), Argon fill, Low-E
- 4 heavy-duty ball bearing hinges
- Energy Controller pre-wired
- Internal push bar standard
- Stainless steel trim
- Easy-clean coved frames
- Standard internal stainless kick plate
- 36" W x 80" H, 36" W x 84" H.

Door Size & Configuration	Net Cooler Opening Size
26" x 80" Single	27-7/8" x 81-5/8"
26" x 80" Double	54-1/2" x 81-5/8"
30" x 80" Single	31-7/8" x 81-5/8"
30" x 80" Double	62-3/8" x 81-5/8"
36" x 80" Single	37-7/8" x 81-5/8"
36" x 80" Double	74-1/2" x 81-5/8"
36" x 84" Single	37-7/8" x 85-19/32"
36" x 84" Double	74-19/32" x 85-19/32"



Shown with optional Fixed Window

Options Available:

- Illuminated glass. (see brochure)
- Door lock
- External kick plate
- STYLELINE® LED Plus lighting system
- Full-length handle
- Heavy duty bumper guards



Full-length Handle



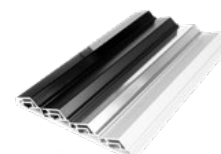
Bumper Guard



Standard Handle



Hydraulic Closer



Finishes