

Application:

Walk-in Cooler

DOE Performance Levels:

75F/75%RH @ 35F Cooler Temp.

Door Configuration:

Single and Double Door

Standard Features:

- Top-mounted heavy-duty hydraulic closer
- High performance glass pack, Argon fill and Low-E
- Floor mount door plate
- Pre-wired energy controller
- Internal push bar
- Improved magnetic door gasket
- Stainless steel trim
- Easy-clean covered frames
- Internal 7.5" stainless kick plate
- Exterior 9.5" silk screen
- 36"W x 80"H, 36"W x 84"H



Two-door French Model Shown

Options Available:

- Illuminated glass (Graph-X)
- No threshold configuration
- Single or double door locks
- Full-length handle
- LED lights
- External kick plate
- Kick plate sizes: 12", 24".
- Kick plate finishes: Stainless & Diamond pattern
- Bumper guards

Net Cooler Openings:

Door Size & Configuration	Net Cooler Opening Size
26" x 80" Single	27-7/8" x 81-5/8"
26" x 80" Double	54-1/2" x 81-5/8"
30" x 80" Single	31-7/8" x 81-5/8"
30" x 80" Double	62-3/8" x 81-5/8"
36" x 80" Single	37-7/8" x 81-5/8"
36" x 80" Double	74-1/2" x 81-5/8"
36" x 84" Single	37-7/8" x 85-19/32"
36" x 84" Double	74-19/32" x 85-19/32"



Bumper Guard



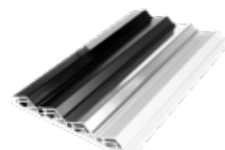
Standard Handle



Front Silk Screen



Standard Push Bar



Finishes



Stainless Kick Plate



Full-length Handle