



New and Improved, Heavy Duty Entrance Door  
For All Cooler Applications

# Styleline<sup>®</sup> **HDD**

# **HEAVY DUTY ENTRANCE DOOR**

# New Floor Mount Design More Robust. Easier to Install

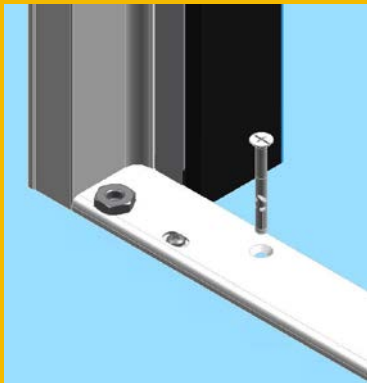
The new and improved STYLELINE Heavy Duty Entrance Door (HDD) is now available with a self-supporting, floor mount door creating a much more resilient design while eliminating surface mount hinges allowing a faster and easier installation.

This new design will stand up to the most high traffic installations and still incorporates our innovative, energy efficient frame design providing the highest levels of condensation protection available.

Standard features include an industry tested, heavy duty hydraulic closure, a tapered push bar, an interior bottom kick plate and full thresholds with floor sweeps.

STYLELINE's Heavy Duty Entrance door system is available in 30" and 36" widths with single or double door configurations. Standard door system heights are 82" and 84". Available finishes are matte black and anodized satin silver.

Options include full length handle, lights, additional bumpers and the ability to remove thresholds and center mullions on double door systems.



**Frame With Threshold  
(standard)**



**Frame With No Threshold  
(optional)**

# ” Strong & Reliable Hydraulic Door Closing System

The STYLELINE HDD Entrance Door stands up to the highest traffic areas and provides shop-per-friendly, trouble-free performance.

STYLELINE's Heavy Duty hydraulic door closer delivers smooth glass door operation. System features adjustments for closing, sweep, and latch speed, and back checks. The mechanisms feature large closer bodies with advanced hydraulic flow for greater door control. Adjust screw clockwise for a slower closing speed and counterclockwise for a faster closing speed.

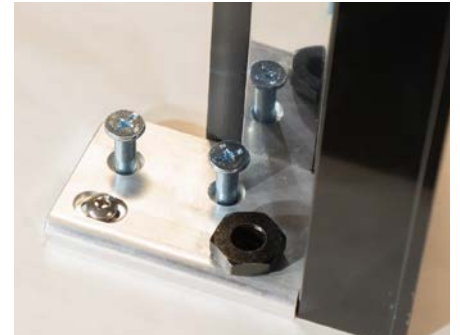
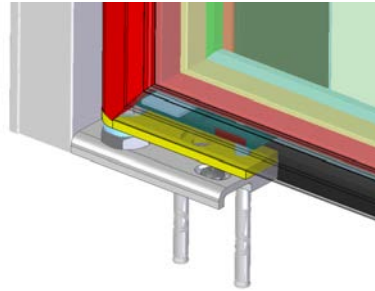
Hydraulic closer is made of lightweight aluminum alloy construction and is available as standard with every order.





# Floor Mount Benefits

STYLELINE's innovative floor mount design consists of a Heavy Duty Frame and Door System capable of withstanding the high traffic volume of any Beer Cave application.



## Threshold

The threshold provides additional structural integrity and insures a square installation. The threshold and standard bottom floor sweep create a tight seal for maximum energy efficiency and reduced chance of condensation.

## Ground Bolts

Provided anchor ground bolts secure the bottom hinge plate firmly to the floor creating a solid and strong door platform.

1/4" bit is required for installation.

## Hinge Plate

Aluminum bottom hinge plates support the complete weight of the door allowing less stress on the frame and simplifies installation by eliminating side hinge plates.

The design also allows for lateral door adjustment similar to other standard STYLELINE systems.





## Interior Push Bar

Heavy duty aluminum push bar mounted directly on the glass is part of what makes STYLELINE's Entrance doors the ideal choice for convenience stores owners.

Available only in black.

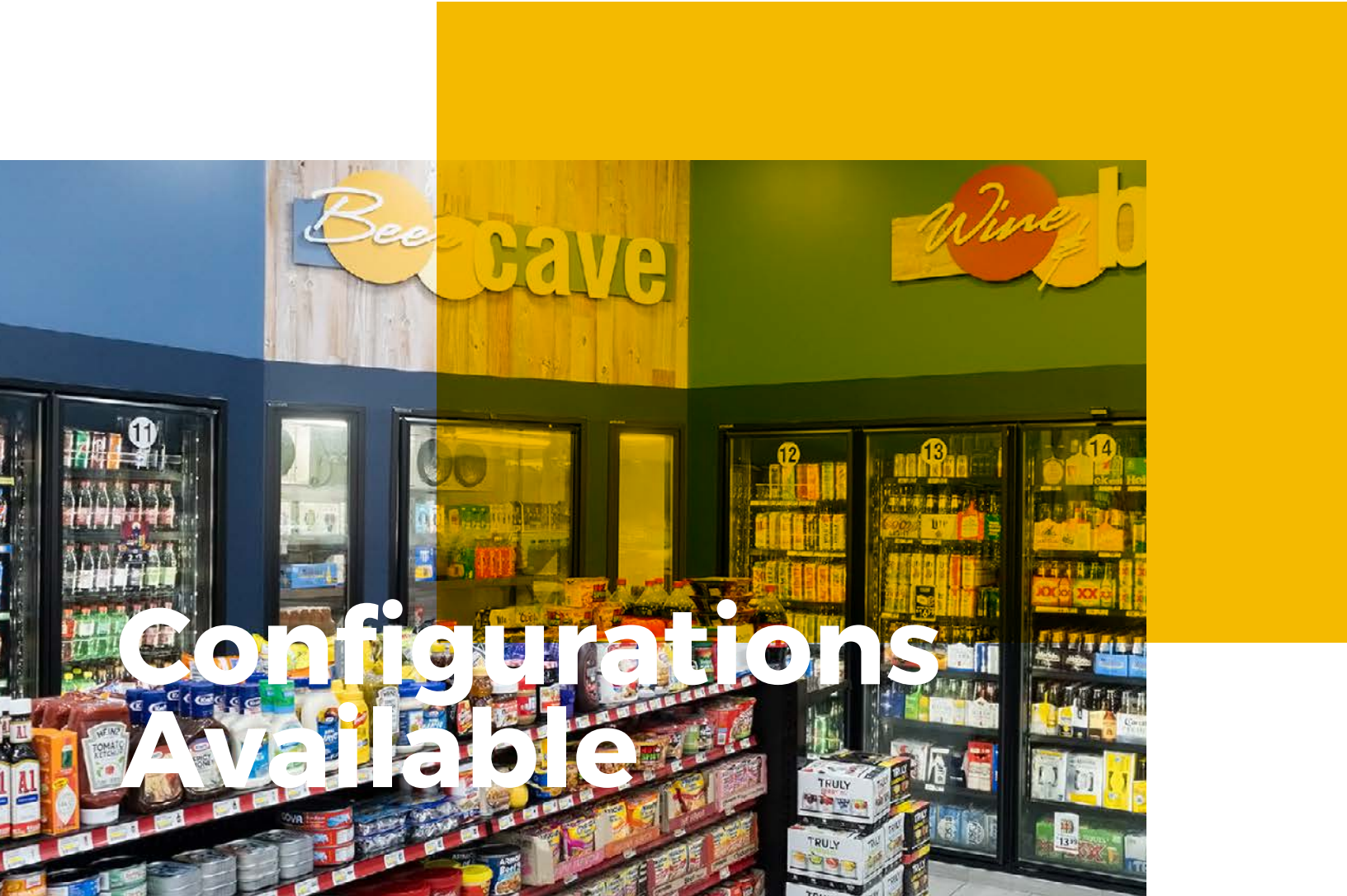


## Interior Kick Plate

Stainless steel kick plates are available for all entrance doors providing extra protection and a piece of mind from glass breakage.

Standard kick plate is 7.5" tall. Kick plates are also available in two additional sizes. 12" & 24" tall.





**Double Door**



**Single Door**

### Application:

Walk-in Cooler

### DOE Performance Levels:

75F/75%RH @ 35F Cooler Temp.

### Door Configuration:

Single and Double Door

### Standard Features:

- Top-mounted heavy-duty hydraulic closer
- High performance glass pack, Argon fill and Low-E
- Floor mount door plate
- Pre-wired energy controller
- Internal push bar
- Improved magnetic door gasket
- Stainless steel trim
- Easy-clean coved frames
- Internal 7.5" stainless kick plate
- Exterior 9.5" silk screen
- 36" W X 82" H, 36" W X 86" H



Two-door French Model Shown

### Options Available:

- No threshold configuration
- Single or double door locks
- Full-length handle
- LED lights
- External kick plate
- Kick plate sizes: 12", 24".
- Kick plate finishes: Stainless & Diamond pattern
- Bumper guards

### Net Cooler Openings:

Door Size & Configuration	Net Cooler Opening Size
26" X 82" Single	27-7/8" x 81-5/8"
26" X 82" Double	54-1/2" x 81-5/8"
30" X 82" Single	31-7/8" x 81-5/8"
30" X 82" Double	62-3/8" x 81-5/8"
36" X 82" Single	37-7/8" x 81-5/8"
36" X 82" Double	74-1/2" x 81-5/8"
36" X 86" Single	37-7/8" x 85-5/8"
36" X 86" Double	74-1/2" x 85-5/8"



Bumper Guard



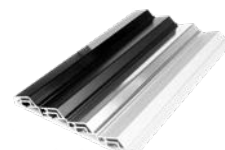
Standard Handle



Front Silk Screen



Standard Push Bar



Finishes



Stainless Kick Plate



Full-length Handle